

## SPECIFICATIONS

Aluminum Roll Jacketing is the premier protective outer surface for mechanical insulation systems including pipe, vessels, and equipment. It protects the insulation and underlying pipes/vessels from physical damage, UV exposure, corrosive atmospheres, and water.

Aluminum Roll Jacketing (also called cladding) is available in smooth, stucco embossed, and 3/16 corrugated (cross-crimped) finishes. For larger surfaces, box-rib and deep corrugated sheets are also available. Aluminum Roll Jacketing has a bare outer surface and comes standard with a 3 mil thick polyfilm moisture barrier heat-laminated to the interior surface to help prevent corrosion of the jacketing and the underlying metal pipe, vessel, or equipment.

Aluminum Roll Jacketing is typically manufactured using alloys 3105 or 3003 which have very similar composition and performance and are considered interchangeable for use as insulation jacketing. Both bare and polysurlyn lined Aluminum Roll Jacketing comply with the requirements of the ASTM Aluminum Jacketing Material standard, C1729, Type 1, which includes the strength and chemical composition requirements for compliance to ASTM B209 (Aluminum Alloy Standard).

### Recommended Uses

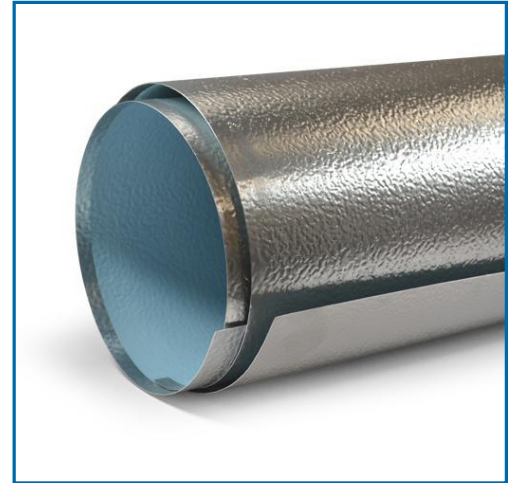
Aluminum Roll Jacketing is recommended for use in all of the following Insulation system applications:

- Standard outdoor use on all pipe and vessel insulation systems up to 8 ft. outer diameter
- Indoor insulation system applications up to 8 ft. outer diameter where increased damage resistance is desired

### Recommended Thicknesses

The thickness of Aluminum Roll Jacketing may vary based on the outer diameter of the insulation system per the requirements of ASTM C1729. This recommended thickness is shown in the table.

Outer Insulation Diameter (in)	Minimum Aluminum Jacket Thickness, inches (mm)	
	Rigid Insulation	Non-Rigid Insulation
≤ 8	.016 (0.4)	.016 (0.4)
Over 8 thru 11	.016 (0.4)	.020 (0.5)
Over 11 thru 24	.016 (0.4)	.024 (0.6)
Over 24 thru 36	.016 (0.4)	.032 (0.8)
> 36	.024 (0.6)	0.040 (1.0)



### Available Surface Finishes:

- Stucco embossed
- Smooth

### Compliance Standards:

- ASTM Aluminum Jacket standard C1729
- ASTM B209 (Aluminum Alloy Standard)